

Discover ... The Collection

by Portsmouth museums



A long saw-shaped rostrum (nose extension) with sharp teeth on either side. It is from a sawfish, a member of the ray family, and was used to catch fish by thrashing it from side to side, dislodging prey from the sea bed and stunning groups of fish. Sawfish are now endangered as they were (and still are) hunted for shark fin soup and for their saws.

Discover ... The Collection

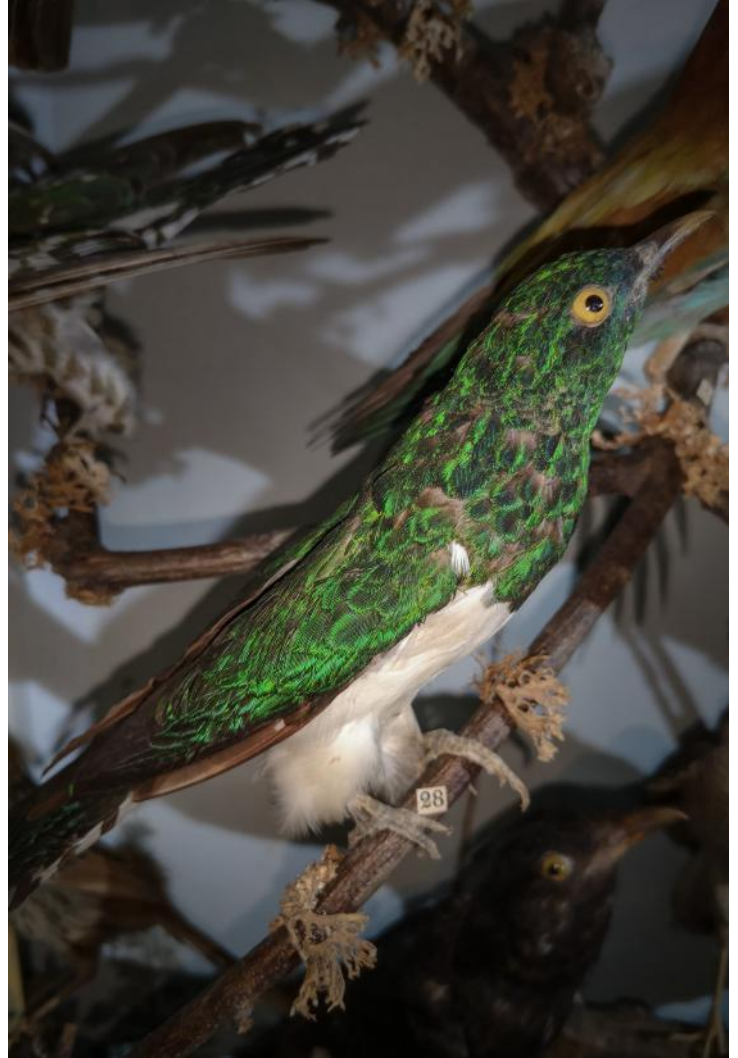
by Portsmouth museums



This exotic looking bird, with a pinkish body and black and white wings is a Hoopoe, and was found in Portsmouth c1900. It has black-tipped crest of pinkish feathers which they can raise when startled. The birds migrate north from Africa to Europe in spring and individual birds can be occasionally be seen mainly on the south coast of England.

Discover ... The Collection

by Portsmouth museums



These birds belong to the large bird case which is full of beautiful birds from various countries such as South America, Africa, and Asia. Some of the most striking ones are the Brown-headed kingfisher (top left), Malachite Kingfisher (bottom left), and African Emerald Cuckoo (right).

Discover ... The Collection

by Portsmouth museums



Although small, the stoat is a fierce hunter, able to hunt rabbit many times larger than itself. They are often confused with weasels, but can be separated by their larger size and black tip to the tail.

Discover ... The Collection

by Portsmouth museums



Buzzards are the most common and widespread birds of prey in the UK, and can often be seen soaring high in the sky on sunny days. Their diet consists mostly of small mammals, birds, carrion and earthworms.